

## Solid State Relay Accessory Protection Cover



- Apply for EPI, EPJ single phase
- Dimension: 57.5 \* 44.6 \* 24 mm
- Weight: 9.3 g

### Product Selection



**EPC**

EPC  
Series



**-0**

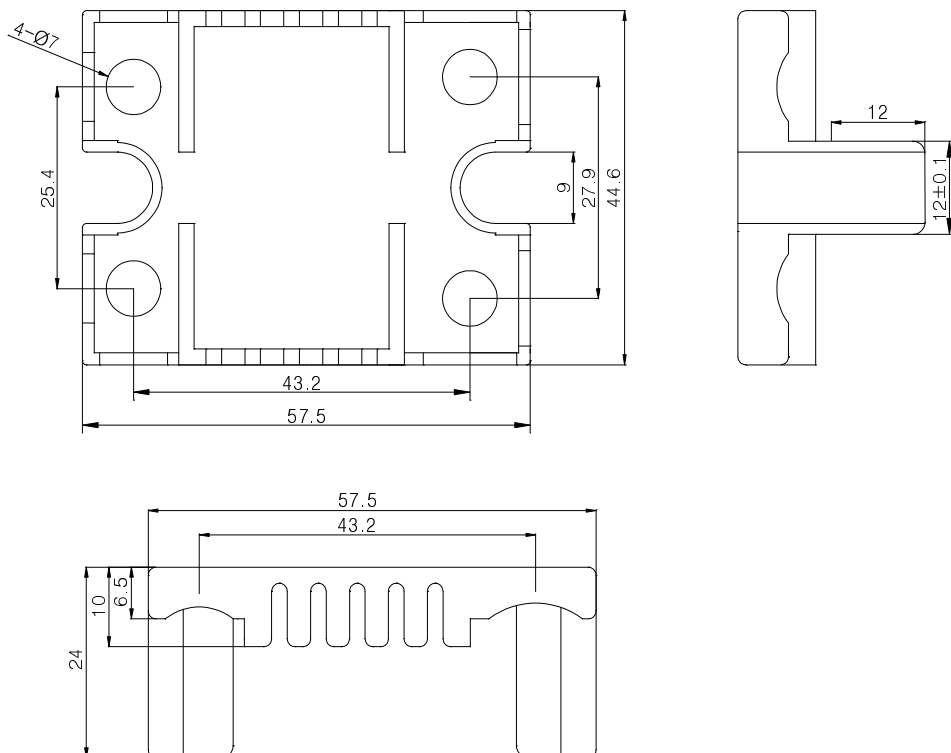
0:Single Phase Type



**A**

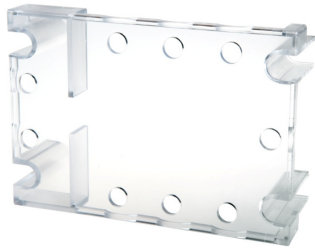
Series  
Number

### EPC-0A (mm)



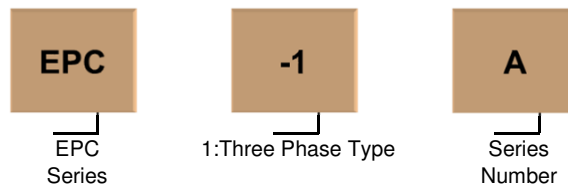
@EILTWIN A/S, All Right Reserved

## Solid State Relay Accessory Protection Cover

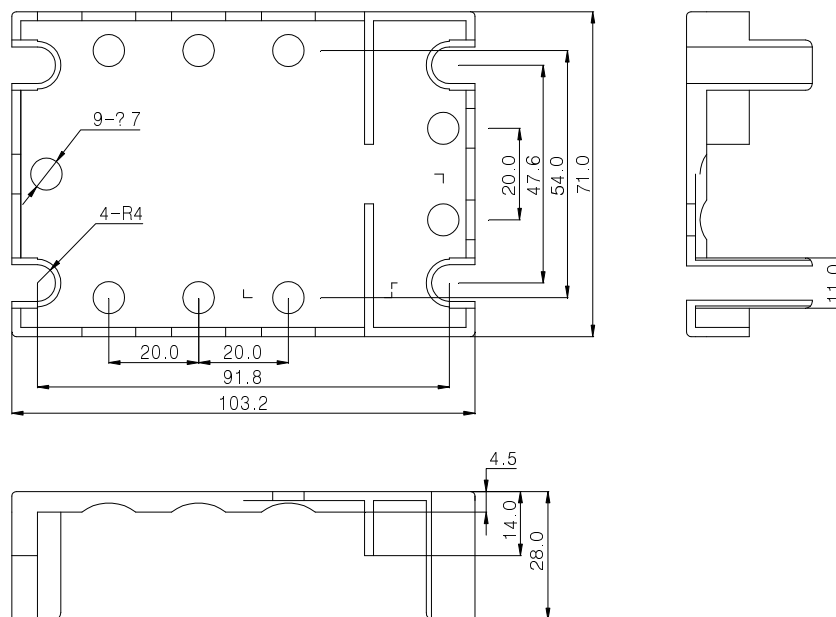


- Apply for EPT, EPQ three phase
- Dimension: 103.2 \* 71 \* 28 mm
- Weight: 25 g

### Product Selection



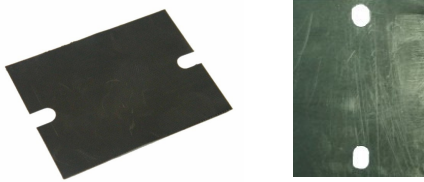
### EPC-1A (mm)



@ELTWIN A/S, All Right Reserved

Eltwin A/S  
www.eltwin.dk

# Solid State Relay Accessory Thermal Pad



- Low thermal resistance
- EPP-0(A) apply for EPI, EPJ single phase
- EPP-1(A) apply for EPS, EPT, EPTY, EPQ, EPQC three phase
- Adhesive on one side(option)
- Silicon resin / glass fiber

## Product Selection



**EPP**

EPP Series



**-0**

0: Single Phase  
1: Three Phase



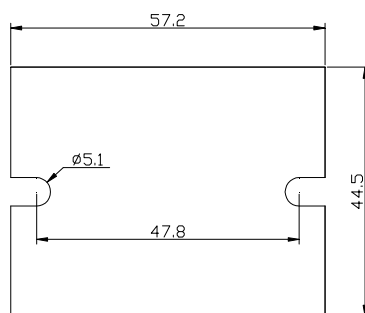
**A**

A: Adhesive on one side  
None: Without Adhesive

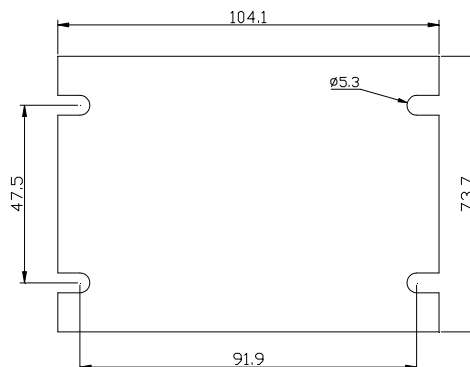
## Technical Specification

Color	Black	
Thickness	0.005mm	
Adhesive One Side	Yes	
Thermal Resistance	EPP-0(A)	0.48°C-in <sup>2</sup> //W@25 psi
	EPP-1(A)	0.48°C-in <sup>2</sup> //W@25 psi
Thermal Conductivity	2.0W/m-K	
Flame Rating	V-O	
Continuous Temperature Range	-60°C ~180°C	
Weight (typical)	EPP-0(A)	0.4g
	EPP-1(A)	0.9g

## Installation



EPP-0(A)



EPP-1(A)

## Product Certification



@ELTWIN A/S, All Right Reserved