

# INDUSTRIAL IN-LINE HEATERS

## Description

The majority of industrial immersion heaters can be installed in a heater vessel, either horizontal, or vertical, to make an in-line electric heater.

The applications for in-line electric heaters are varied, from a simple primary heating solution, to lubrication oil heating, thermal fluids and even process air heating. Heatrod Elements has a range of standard, made to order solutions.

The LRW & LWER range of in-line heaters are designed for industrial water heating applications. Usually manufactured to bespoke customer requirements. The elements are fixed using compression fittings into heavy duty flanges. A wide range of flange and shell materials are available.



## Fields of Application

- Lubrication oil heating
- Thermal fluids
- Process air heating

## Benefits

- IP56 terminal cover in a range of materials
- control & high limit thermostats
- Incoloy® 825 alloy sheathed elements
- Operating pressures up to 10 bar (standard)
- Brass, carbon, or stainless steel flanges
- Vessels in copper, carbon, or stainless steels
- Variety of voltage options
- Standard range up to 180kw
- Vertical options available

## LRW/LWER In-line Heaters

The LRW and LWER range of in-line heaters are designed for industrial water heating applications. Usually manufactured to bespoke customer requirements. The elements are fixed using compression fittings into heavy duty flanges. A wide range of flange and shell materials are available.

Key features:

- IP56 terminal cover in a range of materials
- Incoloy 825 alloy sheathed elements
- Brass, carbon or stainless steel flanges
- Vessels in copper, carbon or stainless steels
- Standard range up to 180kW
- Control & high limit thermostats
- Operating pressures up to 10 bar (standard)
- Wide range of thermostats available
- Variety of voltage options
- Vertical options available



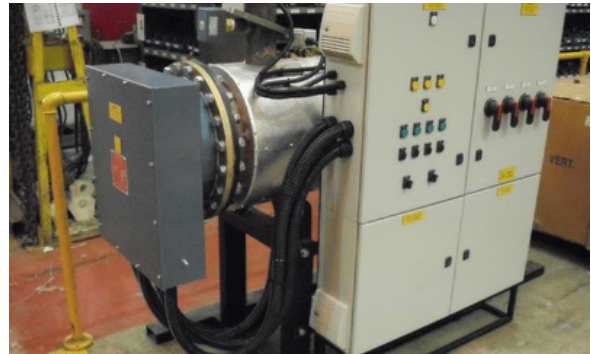
# INDUSTRIAL IN-LINE HEATERS

## LWE In-line Heaters

The LWE range of in-line heaters is designed for industrial heating applications for water and other liquids. Usually manufactured to bespoke customer requirements. The design utilises copper, carbon or stainless steel sheaths and vessels.

Key features:

- IP56 terminal cover in a range of materials
- Copper, carbon or stainless steel sheaths
- Brass, carbon or stainless steel flanges
- Standard range up to 180kW
- Variety of voltage options
- Control & high limit thermostats
- Elements can be replaced without draining vessel
- Operating pressures up to 10 bar (standard)
- Wide range of thermostats available
- Vertical options available



## LHE In-line Heaters

The LHE range of in-line heaters is designed for industrial heating applications for oil. Usually manufactured to bespoke customer requirements. The design utilises plain, or extended surface carbon, steel sheaths, all with removable ceramic elements, enabling element maintenance without the need for system draining.

Key features:

- IP56 terminal cover in a range of materials
- Plain or extended surface carbon steel sheaths
- Low watts density extended surface carbon steel sheath for light oils
- Wide range of thermostats available
- Custom designs
- Control & high limit thermostats
- Elements can be replaced without draining vessel
- Operating pressures up to 10 bar (standard)
- Standard range up to 180kW
- Variety of voltage options

